

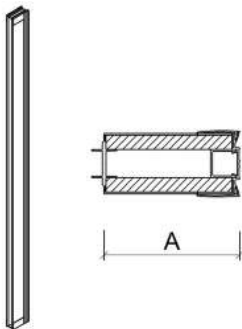
Overview



Wall Thickness:		
Track	2 11/16"	68.4mm
Panel outside to outside	2 17/32"	64.4mm
Panel thickness	5/8"	15.88mm
Internal cavity	1 1/4"	31.8mm
Glass Thickness:		
Glass walls and framed swing doors	1/4"	6mm
Framless pivot doors	13/32"	10mm
Frameless barn doors	13/32"	10mm

Connectors

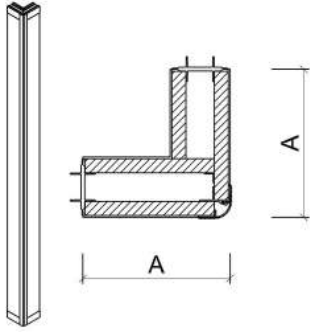
Connectors are sections of wall that either start a wall run, terminate a wall run or join two sections of walls. Connectors are standard in size but can be modified as need for site conditions.



Wall Start

Description: Wall Starts begin a wall run and connect to existing base building elements; typically drywall.

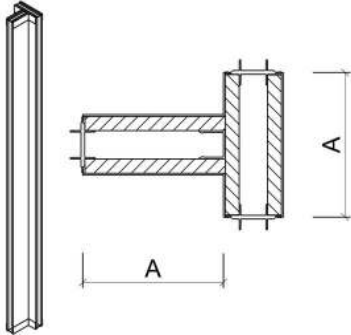
Dimension A: 6"*



Corner Connector

Description: Joins two sections of wall at a 90° angle.

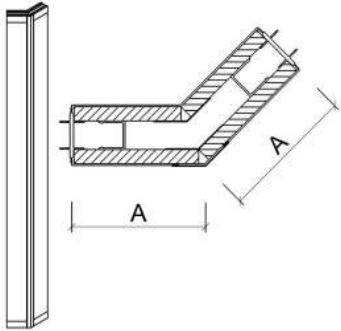
Dimension A: 6"*



T Connector

Description: Joins two sections of wall in three directions at a 90° angle.

Dimension A: 6"*



45° Connector

Description: Joins two sections of wall at a 45° angle.

Dimension A: 6"*



Aluminum End Cap

Description: Aluminum Ends are flat clear anodize aluminum profiles that terminate a wall run.. The same profile is used for framing Door Openings, Frameless Barn Door Openings and Frameless Glass Pivot Doors. Aluminum Ends can also end wall runs connecting to external windows and Apex Glass panels.

Note: Connector dimension may be altered if needed for achieving desired layouts and based on site conditions.

*Dimensions shown may be rounded for convenience and may be slightly larger or smaller than shown.

Solid Walls

Solid Vertical

Solid Vertical walls are made from 5/8" laminate panels from each side with a 1 1/4" internal cavity that can be used for sound insulation and wire/cable management. Panel segments are 30" wide center stud to stud. Different widths can be requested and will be used when shorter spans are needed.

Walls higher than 9' high require segmentation. Segments will be determined by door line or glass line unless otherwise requested.



Vertical Solid Panels

Description: Elevation shown is for up to 9' height.



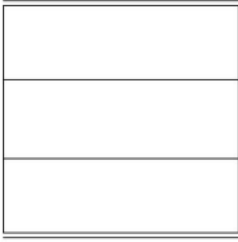
Vertical Solid Panels

Description: Elevation shown is for over 9' height.

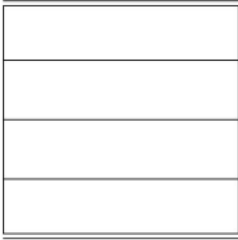
Solid Horizontal

Solid Horizontal walls are made with the same principle as Solid Vertical walls (i.e. panel thickness and internal cavity) but are offered in segmented styles to achieve other looks. Segments will be divided equally and will also follow door line and glass line heights. Specific segment sizes can be requested.

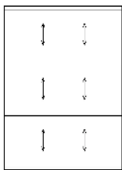
Description: Elevation shows 3 segment elevation.



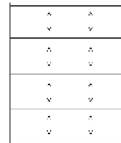
Description: Elevation shows 4 segment elevation.



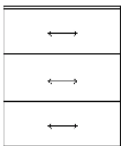
Finish Note: For horizontal panels that have a wood grain finish, the wood grain will be vertical for panels up to 59" wide and horizontal for panels exceeding 59" widths.



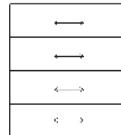
Up to 59" width



Up to 59" width



Over 59" width



Over 59" width

Glass Walls

Glass walls can be ordered in numerous configurations. Below are some typical designs. In almost all instances door line height will determine either top, bottom or both of glass panels. Based upon length of wall glass panels will be divided equally in width for that span unless otherwise requested.

Glass walls require a minimum 6" laminate/track header if there is a ceiling. Freestanding walls can eliminate laminate on top.

Glass is 6mm (1/4") thick with clear anodize frames.



Description: Elevation shows Clerestory style.



Description: Elevation shows Partial Doorline Style.



Description: Elevation shows Partial Full Style.



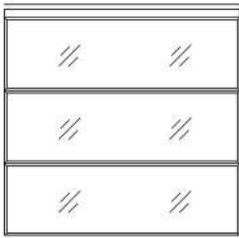
Description: Elevation shows Door Line Style.



Description: Elevation shows Full Style.



Description: Elevation shows Full Segmented Style.



Description: Elevation shows Full 3 Segmented Style.



Description: Elevation shows Full 4 Segmented Style.

Doors

Swing Doors

Apex Swing doors are aluminum framed with either glass or solid laminate inserts. Below are some typical designs.

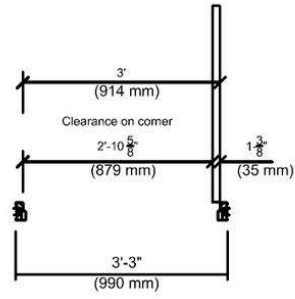
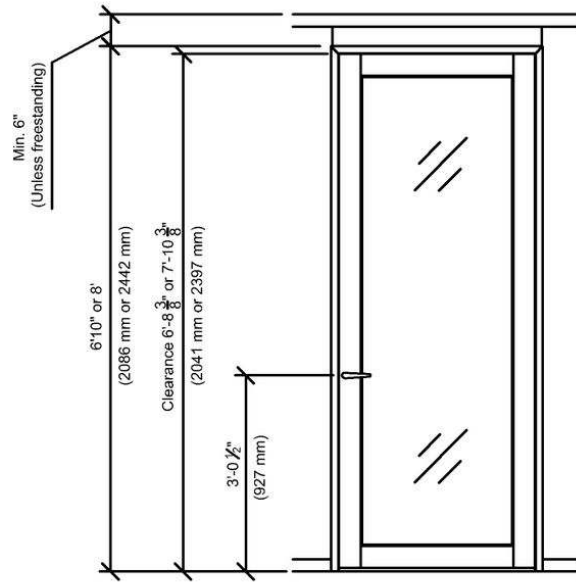
Doors are quoted as either 82" or 96" to top of frame and with 36" width unless otherwise requested.

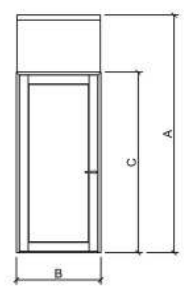
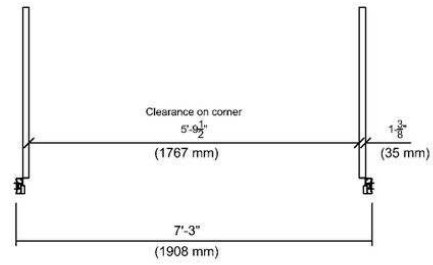
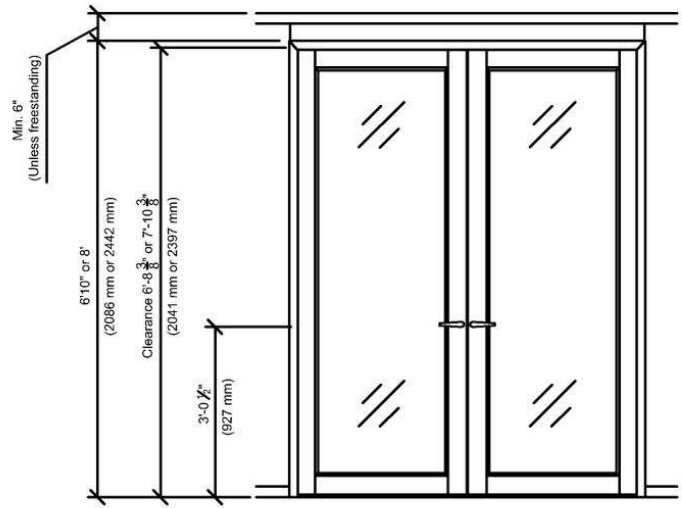
All doors are shipped with privacy function lock unless otherwise requested.

Swing doors require a minimum 6" laminate/track header if there is a ceiling. Freestanding walls can reduce laminate/track header to 3 1/4" on top of door frame.

Door insert can be glass or laminate. Door and frame finish is clear anodize.

Double doors also available.



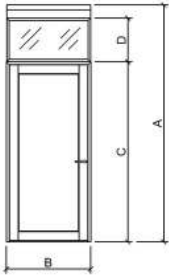


Description: Elevation shows 82" Solid Door with Solid Transom

A is shown as 108"

B is shown as 36"

C is shown as 82"



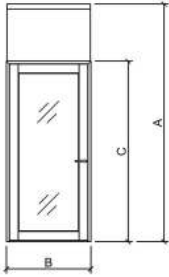
Description: Elevation shows 82" Solid Door with Glass Transom

A is shown as 108"

B is shown as 36"

C is shown as 82"

D is shown as 20" with remaining 6" laminate track header.

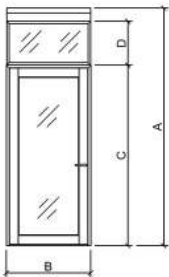


Description: Elevation shows 82" Glass Door with Solid Transom

A is shown as 108"

B is shown as 36"

C is shown as 82"



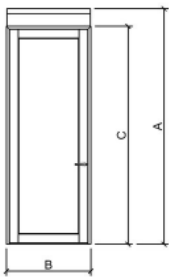
Description: Elevation shows 82" Glass Door with Glass Transom

A is shown as 108"

B is shown as 36"

C is shown as 82"

D is shown as 20" with remaining 6" laminate track header.

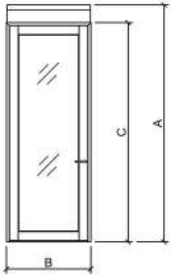


Description: Elevation shows 96" Solid Door with Solid Transom

A is shown as 102"

B is shown as 36"

C is shown as 96"



Description: Elevation shows 96" Glass Door with Solid Transom

A is shown as 102"

B is shown as 36"

C is shown as 96"

Frameless Pivot Doors

Apex Frameless Pivot Doors are 10mm Clear tempered with top and bottom pivots. Below are some typical designs.

Doors are quoted as either 82" or 96" to top of frame and with 36" width unless otherwise requested.

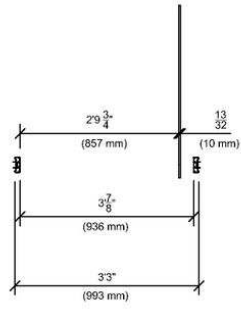
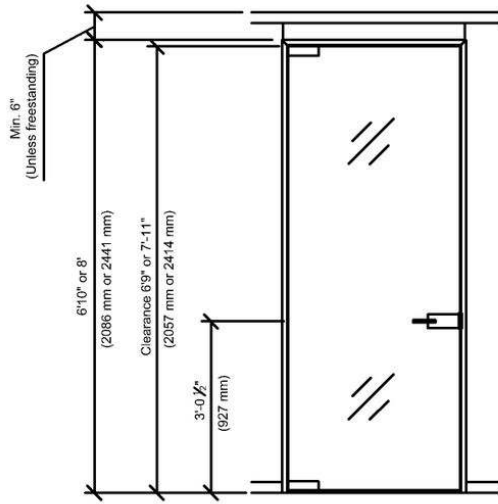
All doors are shipped with privacy function lock unless otherwise requested.

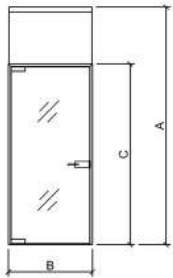
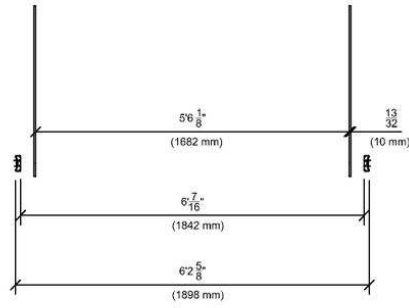
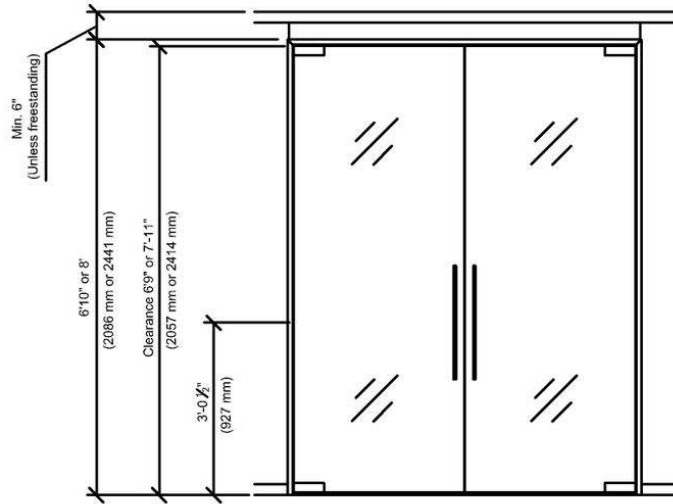
Frameless Pivot Doors require a minimum 6" laminate/track header if there is a ceiling.

Freestanding walls can reduce laminate/track header to 3 1/4" on top of door frame.

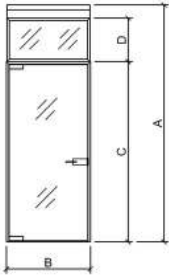
Door opening frame finish is clear anodize.

Double doors also available.

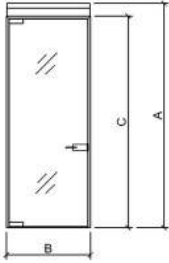




Description: Elevation shows 82" Door with Solid Transom
A is shown as 108"
B is shown as 36"
C is shown as 82"



Description: Elevation shows 82" Door with Glass Transom
A is shown as 108"
B is shown as 36"
C is shown as 82"
D is shown as 20" with remaining 6" laminate track header.



Description: Elevation shows 96" Door with Solid Transom
A is shown as 102"
B is shown as 36"
C is shown as 96"

Sliding Frameless Barn Doors

Apex Sliding Frameless Barn Doors are 10mm Clear frameless tempered with wall mounted track and are available with 24" or 48" non-locking ladder pull or 59" locking ladder pull.

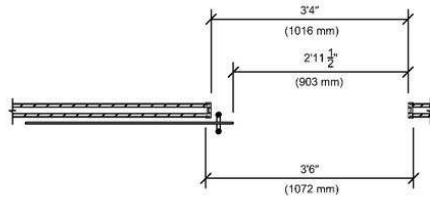
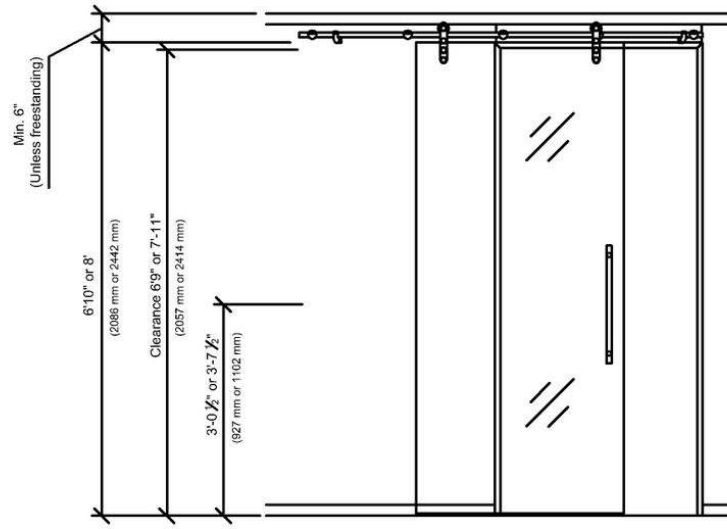
Doors are quoted as either 82" or 96" to top of frame

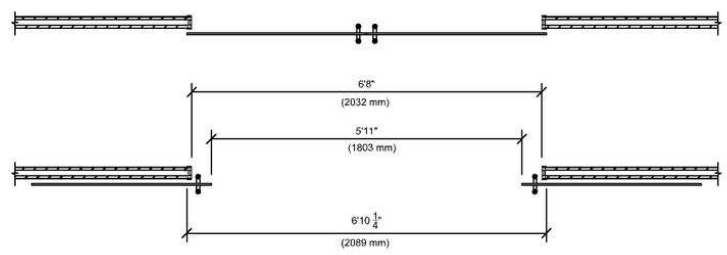
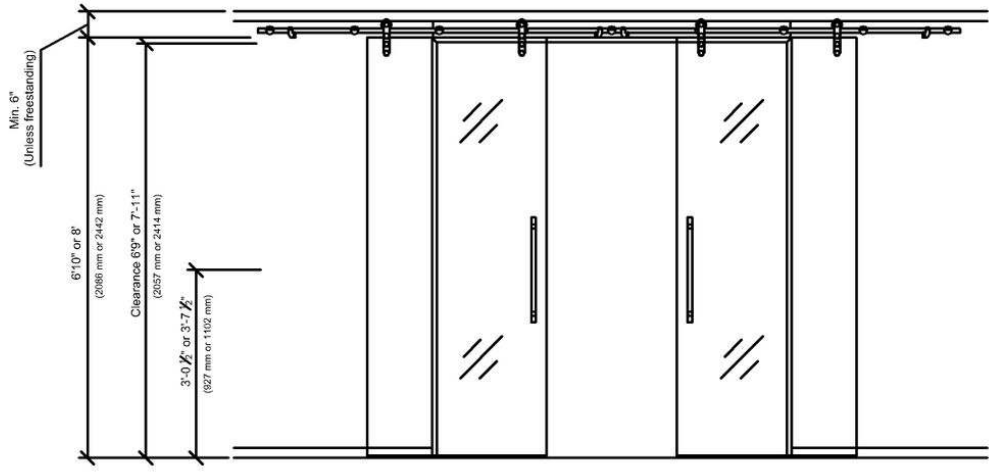
Frameless Barn Doors require a minimum 8" laminate/track header to mount track.

Frameless Barn Doors can be mounted inside or outside but will be quoted and assumed be outside.

Door opening frame finish is clear anodize.

Double doors also available.





Description: Elevation shows 24" Ladder Pull



Description: Elevation shows 48" Ladder Pull



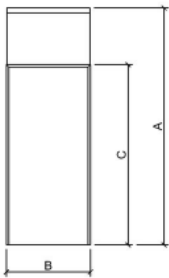
Description: Elevation shows 59" Ladder Pull



Openings

Apex Openings are sized to accept future 36" Apex Swing Doors. Please specify if you require a specific opening size.

Door opening frame finish is clear anodize.

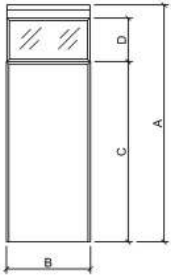


Description: Elevation shows 82" Opening with Solid Transom

A is shown as 108"

B is shown as 36"

C is shown as 82"



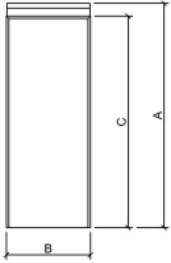
Description: Elevation shows 82" Opening with Glass Transom

A is shown as 108"

B is shown as 36"

C is shown as 82"

D is shown as 20" with remaining 6" laminate track header.



Description: Elevation shows 96" Opening with Solid Transom

A is shown as 102"

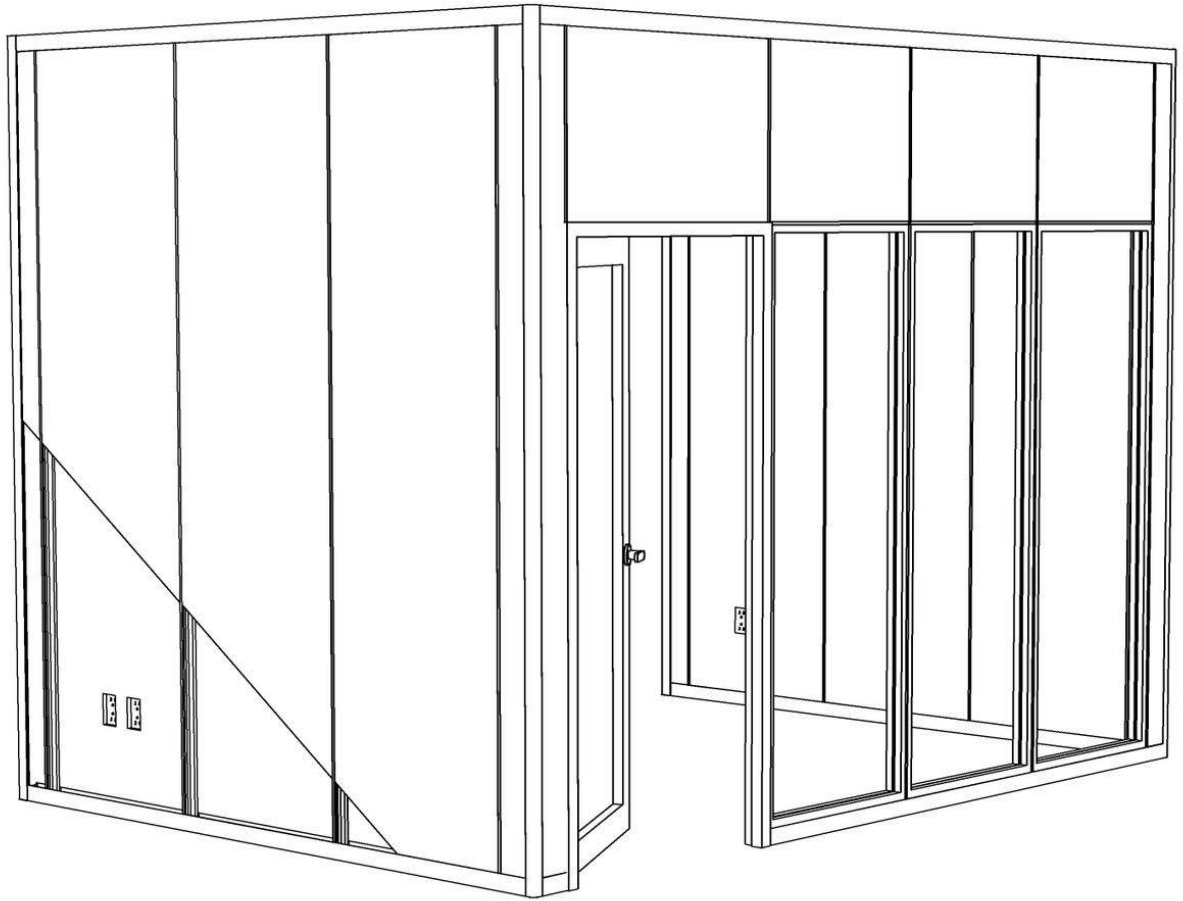
B is shown as 36"

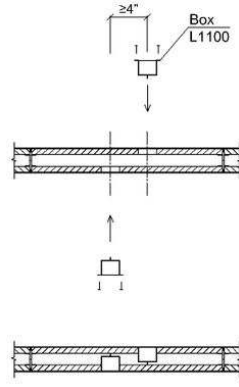
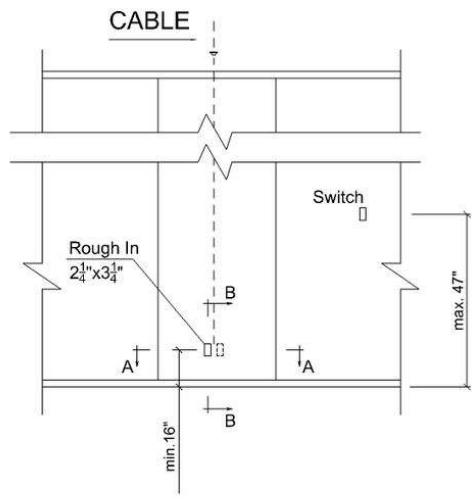
C is shown as 96"

Wiring Electrical/Voice/Data

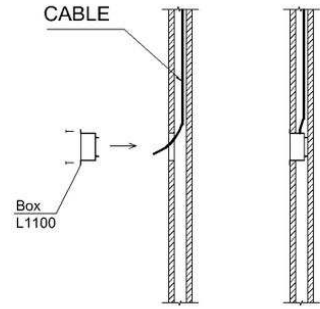
Apex walls allow for easy conventional style wiring for Electrical/Voice/Data needs. Top tracks are notched for drops to provide easy cable/wire management. For electrical Apex ships L1100LUBAR shallow boxes. Shallow boxes must be used. panels are cut with in factory for desired locations. Standard AFF is 16" and 47" for light switches unless otherwise requested. Back to back cutouts must be offset.

Note: Apex glass walls are designed to allow for for wire drops between glass panels of 1/2" BX Cables.





A-A



B-B